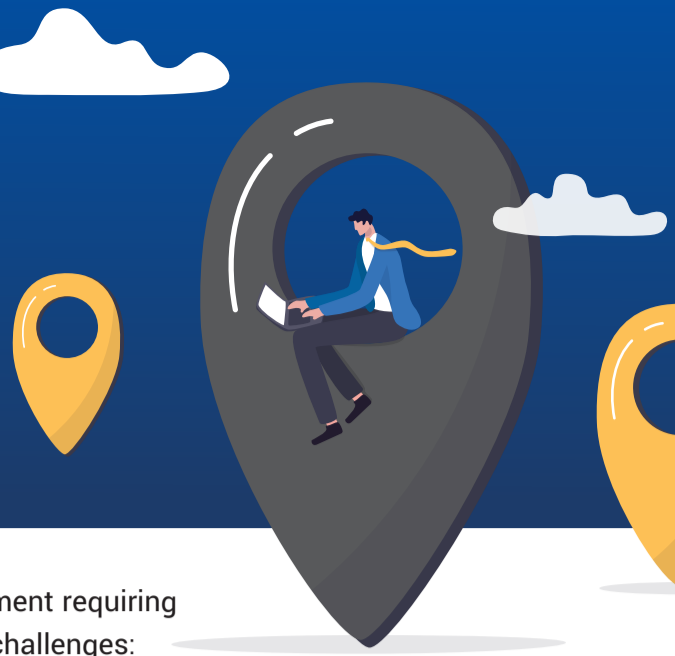


Simplify Technology Deployment With **Staging and Configuration** Services From TailWind



Are you planning to get started with cutting-edge telecom equipment requiring a multi-location rollout? Then you're likely to face the following challenges:

-  Increased downtime
-  Delayed deployment
-  Amplified costs
-  Additional burden on internal IT team
-  Out-of-box malfunctions

These problems are amplified when you're dealing with a multi-location rollout.
Have no fear: TailWind's staging and configuration services can come to your rescue.

What to Expect

At TailWind, we prepare equipment for installation in advance at our staging and configuration lab. Our skilled team of engineers and technicians receives, warehouses, pre-configures, and tests the hardware, assembles it into ready-to-install kits, and safely delivers them for installation.



Our Services

- Equipment procurement
- Warehousing
- Inventory management
- Software imaging
- Kitting and solution assembly

Our technicians will also test the equipment and prepare it for fast and hassle-free installation.

How You Benefit

- Reduced installation time and costs
- Minimal downtime
- Fewer out-of-box malfunctions
- Decreased labor costs
- Guaranteed scalability
- Minimal on-site technician activity

All these advantages translate into frictionless multi-site technology deployment.





Why TailWind?

TailWind is more than just a technology provider. With more than a decade of experience, we strive to be your partner on the journey to digital transformation. Our network of over 3,000 dispatch points supports numerous enterprises in the US and Canada.



Our Promise

When you choose TailWind as your IT services provider, you can expect:

-  **Responsiveness**
Our "always on" approach ensures that there's someone to address your needs 24/7.
-  **Accountability**
We complete every service request or task we accept, no matter how complex it is.
-  **Adaptability**
We tailor our services to your unique requirements instead of relying on cookie-cutter solutions.
-  **Expertise**
Our engineers and technicians are well-trained and have experience working with clients across various domains.

Let's Connect

Ready to make technology deployment easy and hassle-free? **Get in touch** with TailWind for a personalized consultation.